



a.i. solutions Inc.
"The smarter the better."

Access to Space (ATS)

Helping payloads find rides to orbit

Access to Space (ATS) is an interactive mission design web site that provides information, tools and resources to assist mission planners in selecting and planning their ride to space. There are three main areas of the ATS Website: Mission Database, Access Modes, and Design & Query Tools.

The [Mission Database](#) contains mission information, ranging from proposed to manifested missions, from the user community. Most missions are either looking for a ride to space or have ridesharing space available. Numerous search options are available for users to find missions of interest. Missions can be entered by the user community through data input tools. Data is then accessed by users through various search engines. Information provided includes: Orbit Parameters, Ride-Share Opportunities, Spacecraft Parameters, Other Mission Notes, Launch Vehicle, and Contact Information.

The [Access Modes](#) section provides the user a full range of information on a variety of spacecraft alternatives, ranging from launch vehicles to balloons. Access mode toolboxes allow users to review, contrast and compare access mode data. Toolbox topics include: General Information, Performance Capability, Volume Information, Payload Environments and Interfaces, and Launch Site Information. The Compare feature allows users to do side-by-side comparisons of many types of information, such as performance data or payload envelopes.

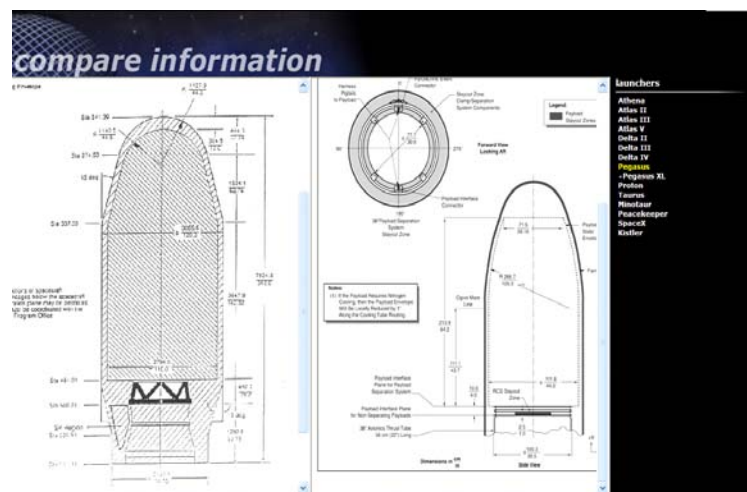
The [Design and Query Tools](#) enable users to find launch vehicles, payloads and other mission or access mode information, based on mission parameters or orbit parameters. It enables the search for a ride or the availability of space. These tools allow users to retrieve information specific to their particular needs.

The Flight Dynamics Web Tools provide an online capability for users to perform standard flight dynamics-type analyses. Users can perform preliminary calculations to refine orbital requirements for their proposed mission.

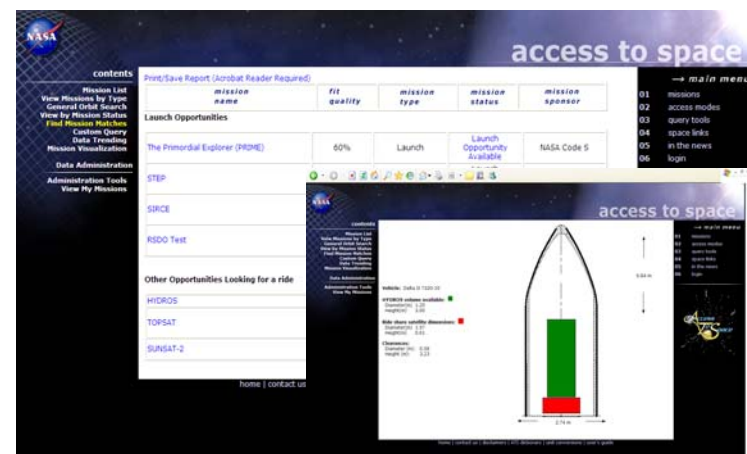
Additional areas contain information on space news, upcoming conferences, and links to other space-related web sites. Links are provided for government space programs, information about advancements in aerospace technology, industry and government. A variety of space access topics are available, including education outreach, manifests, and launch vehicles. Conference Proceedings from past rideshare and small satellite conferences are also available.



Access To Space (ATS) Home Page



Perform Side-by-Side Launch Vehicle Comparisons



Query Tools Find Rideshare Payloads or Find Payloads to Share the Ride



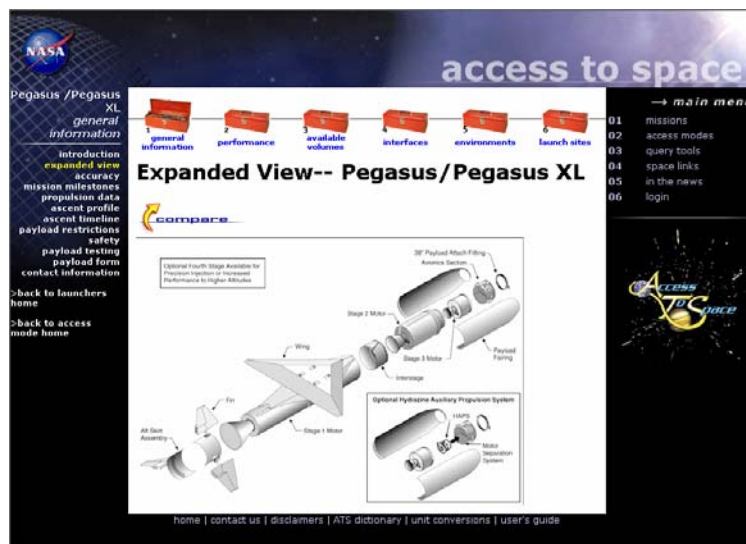
a.i. solutions Inc.
"The smarter the better."

Access to Space (ATS)

Helping payloads find rides to orbit

System Highlights:

- Searchable Online Database of Proposed and Manifested Missions
- Quickly Find Ridesharing Opportunities
- Easy to Use Mission Data Entry
- Automatic E-Mail Notification of New and Updated Missions
- Information on a Variety of Access Modes
 - Launch Vehicles
 - Transfer Vehicles
 - Sounding Rockets
 - Spacecraft Bus Information
- Find Launch Vehicles Based on Performance and/or Volume
- Perform Mission Studies Using the Flight Dynamics Web Tools
- Links to Space-Related Websites



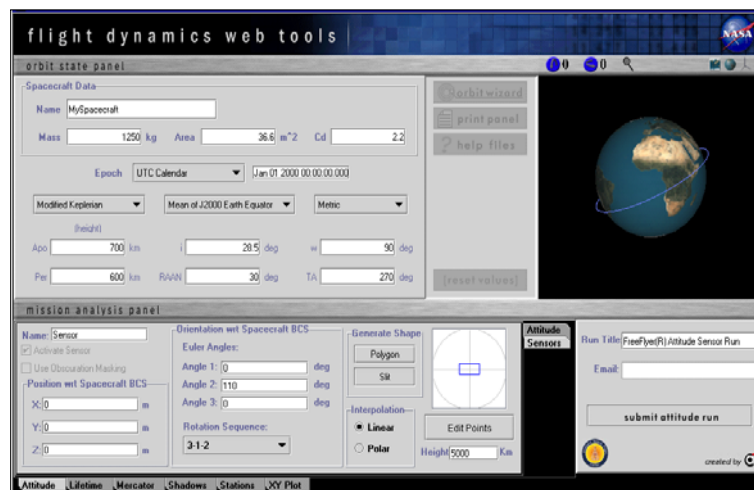
Access Modes Information

ATS Operating Environment:

- Client Requirements:
 - PC Running Windows 95, 98, NT, Me, 2000, XP
 - Internet Explorer Version 4.0 or higher or Netscape Navigator Version 4.0 or higher



Launch Vehicle Fairing Search Tool



Flight Dynamics Web Tools